



## CASE REPORT

onda

## LOCALIZED FAT AND FLABBINESS

### Coolwaves™ Parameters\*

Area	Abdomen
Handpiece	Deep
Power	140 W
Dose	80000 J
Cooling	5° C
Session	1

\* Database Onda protocols refer to a 15x15 cm treatment area – unless otherwise stated. In a single session could be treated 1 or more 15x15 squares according to single patient needs.



*Before Treatment*



*45 Days After Treatment*

## LOCALIZED FAT AND FLABBINESS

### Coolwaves™ Parameters\*

Area	Bra line
Handpiece	Deep
Power	140 W
Dose	80000 J
Cooling	5° C
Session	1

\* Database Onda protocols refer to a 15x15 cm treatment area – unless otherwise stated. In a single session could be treated 1 or more 15x15 squares according to single patient needs.



*Before Treatment*



*45 Days After Treatment*

## CELLULITE

### Coolwaves™ Parameters\*

Area	Trochanter – Inner Thighs
Handpiece	Deep
Power	130 W
Dose	90000 J
Cooling	5° C
Sessions	3
Days between single sessions	30

\* Database Onda protocols refer to a 15x15 cm treatment area – unless otherwise stated. In a single session could be treated 1 or more 15x15 squares according to single patient needs.



*Before Treatment*



*90 Days After Treatment*

## LOCALIZED FAT

### Coolwaves™ Parameters\*

Area	Abdomen
Handpiece	Deep
Power	130 W
Dose	100000 J
Cooling	5° C
Sessions	3
Days between single sessions	10

\* Database Onda protocols refer to a 15x15 cm treatment area – unless otherwise stated. In a single session could be treated 1 or more 15x15 squares according to single patient needs.



*Before Treatment*



*30 Days After Treatment*

## LOCALIZED FAT

### Coolwaves™ Parameters\*

Area	Abdomen
Handpiece	Deep
Power	120 W
Dose	80000 J
Cooling	5° C
Sessions	2
Days between single sessions	20

\* Database Onda protocols refer to a 15x15 cm treatment area – unless otherwise stated. In a single session could be treated 1 or more 15x15 squares according to single patient needs.



*Before Treatment*



*40 Days After Treatment*

## CELLULITE

### Coolwaves™ Parameters\*

Area	Thighs – Knees
Handpiece	1 Deep, 2 Shallow
Power	130 W
Dose	70000 J
Cooling	5° C
Sessions	3
Days between single sessions	20

\* Database Onda protocols refer to a 15x15 cm treatment area – unless otherwise stated. In a single session could be treated 1 or more 15x15 squares according to single patient needs.



*Before Treatment*



*60 Days After Treatment*

## CELLULITE

### Coolwaves™ Parameters\*

Area	Thighs
Handpiece	1 Deep, 2 Shallow
Power	140 W
Dose	90000 J
Cooling	5° C
Sessions	3
Days between single sessions	20

\* Database Onda protocols refer to a 15x15 cm treatment area – unless otherwise stated. In a single session could be treated 1 or more 15x15 squares according to single patient needs.



*Before Treatment*



*60 Days After Treatment*



## CELLULITE – LOCALIZED FAT

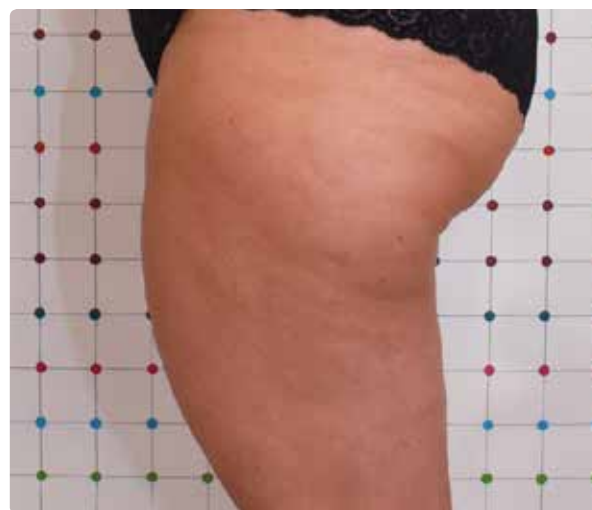
### Coolwaves™ Parameters\*

Area	Trochanter
Handpiece	1 Deep, 2 Shallow, 1 Deep
Power	140 W
Dose	90000 J
Cooling	5° C
Sessions	4
Days between single sessions	20

\* Database Onda protocols refer to a 15x15 cm treatment area – unless otherwise stated. In a single session could be treated 1 or more 15x15 squares according to single patient needs.



*Before Treatment*



*80 Days After Treatment*

## CELLULITE - LOCALIZED FAT

### Coolwaves™ Parameters\*

Area	Trochanter - Under Buttocks - Thighs
Handpiece	1 Deep, 2 Shallow, 1 Deep
Power	140 W
Dose	90000 J
Cooling	5° C
Sessions	4
Days between single sessions	20

\* Database Onda protocols refer to a 15x15 cm treatment area - unless otherwise stated. In a single session could be treated 1 or more 15x15 squares according to single patient needs.



*Before Treatment*



*80 Days After Treatment*

## LOCALIZED FAT - FLABBINESS

### Coolwaves™ Parameters\*

Area	Abdomen
Handpiece	2 Deep, 1 Shallow
Power	120 W
Dose	70000 J
Cooling	5° C
Sessions	3
Days between single sessions	20

\* Database Onda protocols refer to a 15x15 cm treatment area – unless otherwise stated. In a single session could be treated 1 or more 15x15 squares according to single patient needs.



*Before Treatment*



*60 Days After Treatment*

## LOCALIZED FAT

### Coolwaves™ Parameters\*

Area	Trochanter – Under Buttocks
Handpiece	Shallow
Power	120 W
Dose	60000 J
Cooling	7° C
Sessions	4
Days between single sessions	15

\* Database Onda protocols refer to a 15x15 cm treatment area – unless otherwise stated. In a single session could be treated 1 or more 15x15 squares according to single patient needs.



*Before Treatment*



*60 Days After Treatment*

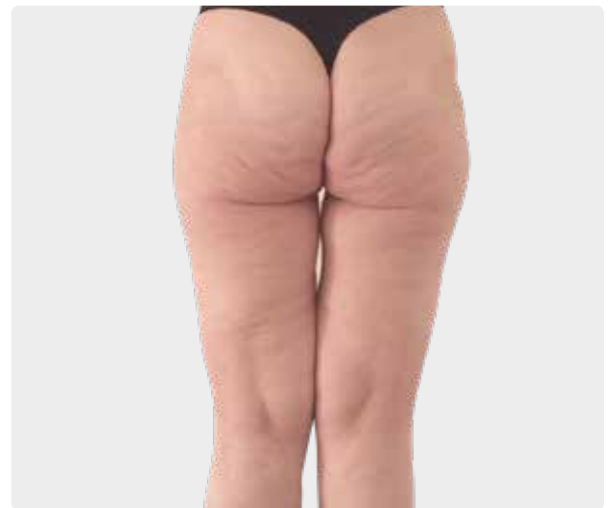
## CELLULITE

### Coolwaves™ Parameters

Area	Trochanter – Buttocks – Thighs
Handpiece	Deep
Power	200 W
Dose	215000 J
Cooling	5° C
Session	1
Treated Area	25x21 cm



*Before Treatment*



*50 Days After Treatment*

## CELLULITE

### Coolwaves™ Parameters

Area	Thighs – Knees
Handpiece	Deep
Power	180 W
Dose	215000 J
Cooling	5° C
Sessions	3
Days between single sessions	15
Treated Area	13x18 cm



*Before Treatment*



*50 Days After Treatment*

## CELLULITE

### Coolwaves™ Parameters

Area	Trochanter – Buttocks – Thighs
Handpiece	Deep
Power	200 W
Dose	215000 J
Cooling	5° C
Session	1
Treated Area	25x21 cm



*Before Treatment*



*30 Days After Treatment*

## CELLULITE

### Coolwaves™ Parameters

Area	Inner Thighs – Knees
Handpiece	Deep
Power	175 W
Dose	215000 J
Cooling	5° C
Session	1
Treated Area	20x30 cm



*Before Treatment*



*30 Days After Treatment*



## FLABBINESS

### Coolwaves™ Parameters\*

Area	Abdomen
Handpiece	Shallow
Power	140 W
Dose	80000 J
Cooling	7° C
Session	1

\* Database Onda protocols refer to a 15x15 cm treatment area – unless otherwise stated. In a single session could be treated 1 or more 15x15 squares according to single patient needs.



*Before Treatment*



*30 Days After Treatment*

**DEKA**  
Innate Ability

**DEKA M.E.L.A. s.r.l.**  
Via Baldanzese, 17  
50041 Calenzano (FI) - Italy  
Ph. +39 055 88.74.942  
Fax +39 055 88.32.884



[www.dekalaser.com](http://www.dekalaser.com)